

# Anti-solar container communication station flow battery energy safety distance

*LiFePO<sub>4</sub> Battery, safety*

*Wide temperature: -20~55°C*

*Modular design, easy to expand*

*Wall-Mounted&Floor-Mounted*

*Intelligent BMS*

*Cycle Life: ≥ 6000*

*Warranty: 10 years*



## Overview

---

- The distance between battery containers should be 3 meters (long side) and 4 meters (short side). Our firm concurs that maintaining an aisle not only facilitates access but also. Additionally, stacking containerized battery systems can further minimize the footprint.
- For solid protective walls, the spacing should be 4 meters for heat dissipation surfaces. Over extended periods and multiple charge-discharge cycles—especially during overcharge, over-discharge, or overheating—cells can suffer short-circuit failure, resulting in safety risks and potentially initiating a chain reaction that could lead to fire or explosion if robust safety measures are. Safety distance of large container power station, power outputs, and storage capacity according to your needs. Lower energy/maintenance costs ensur fluctuations from varied energy sources. Battery Energy Storage Systems, or BESS, help stabilize electrical grids by providing steady power flow despite fluctuations from inconsistent generation of renewable energy sources and other disruptions. Systems are designed to prevent fire, electric shock, and other hazards.

## Anti-solar container communication station flow battery energy safe

---



### Safety Distance of Energy Storage Containers: What You Need to Know

Let's talk about the safety distance of energy storage containers - the unsung hero of renewable energy systems. Spoiler: It's not just about avoiding fireworks.

[Get Price](#)

---

### Energy storage battery container spacing

By definition, a Battery Energy Storage Systems (BESS) is a type of energy storage solution, a collection of large batteries within a container, that can store and discharge electrical energy upon request.



[Get Price](#)

---



### Essential Safety Distances for Large-Scale Energy Storage Power

Discover the key safety distance requirements for large-scale energy storage power stations. Learn about safe layouts, fire protection measures, and optimal equipment spacing to ...

[Get Price](#)

---

### Battery distance of mobile base

## station equipment battery solar

Our's Containerized Battery Energy Storage Systems (BESS) offer a streamlined, modular approach to energy storage. Packaged in ISO-certified containers, our Containerized BESS are quickly ...



[Get Price](#)



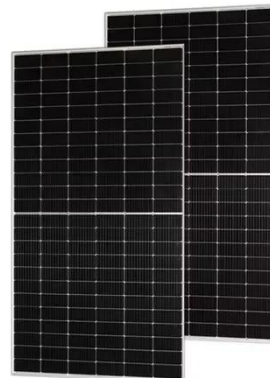
## Safety distance of large battery solar container power station

In our modular design for easy additional solar power capacity. Customize your container according to various configurations, power outputs, and storage capacity according to your needs. Lower your ...

[Get Price](#)

## Battery Energy Storage Systems: The Critical Role of Site Layout in

Wärtsilä, a global leader in innovative technologies for energy markets, recommends approximately 10 feet between containers for ease of maintenance and to ensure workers and firefighters can move ...



[Get Price](#)

## SAFETY DISTANCE REQUIREMENTS FOR LARGE ENERGY

The Energy Storage Shipping Container installation requires adequate space for



the container dimensions plus additional clearance (typically 1-1.5 meters on all sides) for proper ventilation, ...

[Get Price](#)

---

## Battery Energy Storage Systems: Main Considerations for Safe

This webpage includes information from first responder and industry guidance as well as background information on battery energy storage systems (challenges & fires), BESS installation ...



[Get Price](#)



## The safety design for large scale or containerized BESS

Once the smoke sensor and temperature sensor detect the high temperature fire fault signal, the container can notify the user through sound and light alarm and remote communication, ...

[Get Price](#)

---

## Safety distance specification for battery energy storage system of

The EASE Guidelines on Safety Best Practices for Battery Energy Storage Systems (BESS) are designed to support the safe deployment of outdoor, utility-

scale lithium-ion (Li-ion) BESS across ...

[Get Price](#)



---

## Contact Us

For catalog requests, pricing, or partnerships, please visit:  
<https://k3gizycko.pl>

