

Base station communication equipment installation requirements



Base station communication equipment installation requirements

Process of Installing a Base Transceiver Station (BTS)



Installing a Base Transceiver Station (BTS) is a critical step in building mobile communication networks. Here's a step-by-step guide to the process:

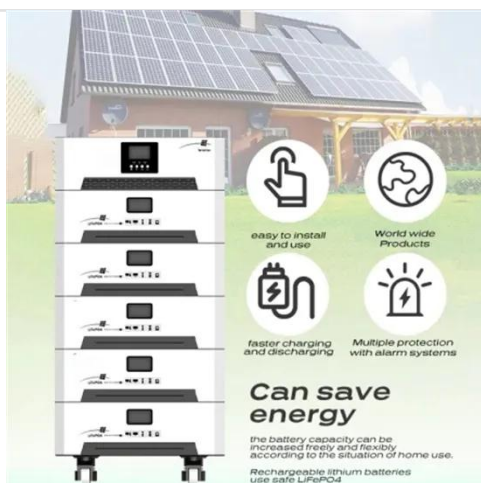
[Get Price](#)

Equipment Needed to Build a 5G Base Station

Overview of 5G base station equipment, components, and layered architecture covering antenna systems, RRU/BBU functions, transmission, power, and monitoring.



[Get Price](#)



Construction Requirements by Service

Construct and place into operation at least 10% of designated geographic areas within 2 years of initial license grant, 40% within 4 years, 70% within 6 years, and 100% of the designated geographic areas ...

[Get Price](#)

Complete Guide to 5G Base Station

Construction , Key Steps, Equipment

Explore how 5G base stations are built--from site planning and cabinet installation to power systems and cooling solutions. Learn the essential components, technologies, and challenges ...

[Get Price](#)



Base Stations

The present-day tele-space is incomplete without the base stations as these constitute an important part of the modern-day scheme of wireless communications. They are referred to as cell ...

[Get Price](#)

WSS 4G System Base-Station Installation Manual

This section presents the physical characteristics of the WSS 4G System, including the Aircraft Base Radio (ABR), Full Duplex Quad (FDQ) Antenna, and High- Performance Blade (HPB) Antenna.

[Get Price](#)



How to Set Up a Base Station CB System: A Complete ...

This guide will walk you through the basic understanding of Base Station CB System, how to install them and how to do that right

[Get Price](#)

DHA 27 32 43 Radio Communications Equipment

Note: A typical Radio Communications System consists of a base station, handheld portable radios, vehicle units, antennas, power supplies, controllers, electrical panels, computers, pagers and other ...

[Get Price](#)

Outdoor communication base station equipment installation ...

Yes, with a proper 12V DC power supply (3-5 amps minimum) and base antenna system. However, dedicated base stations typically offer better features, ergonomics, and performance for home use.

[Get Price](#)

COMMUNICATION SITE BUILDING DESIGN AND INSTALLATION

For shipping, these structures must meet strict dimensional requirements,

including protrusions such as HVAC, RF entry assemblies, or AC entrances. In the US, state certification may be required if pre-fab ...

[Get Price](#)



Contact Us

For catalog requests, pricing, or partnerships, please visit:
<https://k3gizycko.pl>

