

Can a 1.8-meter-tall storage bed be used



Overview

A small shed is the best for homeowners who are gardeners or have a green thumb. All the tools and yard equipment they will need will fit the small shed size with a width and length of 6 by 8 feet or about 1. All materials stored in tiers shall be stacked, racked, blocked, interlocked, or otherwise secured to prevent sliding, falling or collapse. Employers shall conspicuously post maximum. Got a code question?

Just ask. Get Started with AI Navigator COPYRIGHT © 2026 INTERNATIONAL CODE COUNCIL, INC. The 12-footer is also good for storage if you've got extra bicycles or yard gear you need to. Many facilities use elevated storage platforms or raised mezzanines to transform unused overhead space into storage space.

Can a 1 8-meter-tall storage bed be used



Elevated Storage Platform Safety Requirements , EMC

Elevated platform beds used for storage need to be set up with building codes and safety in mind.

[Get Price](#)

Size Limits of Modular Home Construction

Modular factories can produce much larger modules than most roadway overpass and turns can safely accommodate. Please keep in mind that we are talking only about size limitations of the individuals ...



[Get Price](#)



CHAPTER 5 GENERAL BUILDING HEIGHTS AND AREAS

ICC Digital Codes is the largest provider of model codes, custom codes and standards used worldwide to construct safe, sustainable, affordable and resilient structures.

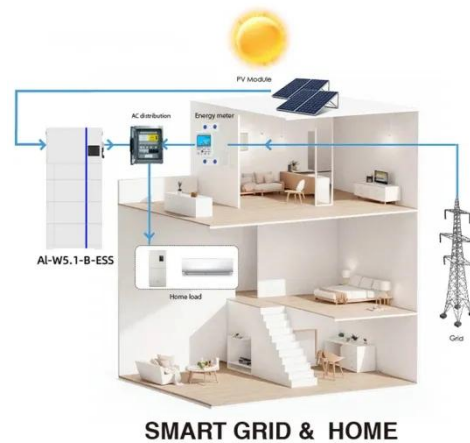
[Get Price](#)

Shed Sizes: How to choose the right

shed size?

Small sheds are perfect for storing tools, push mowers, garden hoses, gas cans, and a traditional weed whacker. These are great to install for properties with limited yard space as well.

[Get Price](#)



Your Storage Unit Size Guide for 2025

That's because most storage units can be loaded from the bottom up, which means you can cover the entire floor and stack your things up to the full 8-foot height.

[Get Price](#)

Your Storage Unit Size Guide for 2025

What Size Storage Unit Do I Need? Pods Container Sizes: A Closer Look What Fits in A 16-Foot Pods container? What Fits in A 12-Foot Pods container? What Fits in An 8-Foot Pods container? How Do I Calculate How Much Storage Space I Need? How Do I Pack and Load to Maximize Storage Space? As you use this guide, remember that the storage unit sizes you choose for your belongings and how you pack and load will make a big impact on how much you can fit in a space. But no worries -- we've got plenty of advice on that, too. To learn how to pack and load like a pro, see our packing



and loading tips and video, and check out this PODS Blog a See more on pods emcinsurance

Elevated Storage Platform Safety Requirements , EMC

Elevated platform beds used for storage need to be set up with building codes and safety in mind.

[Get Price](#)



Self Storage Unit Size Guide , StorageCafe

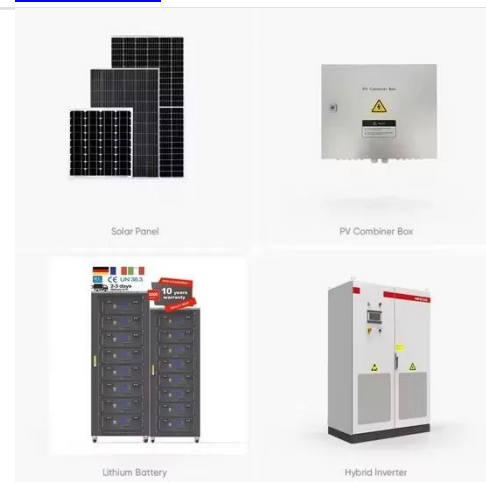
Whether you're renting self storage for the first time or you've used this service before, knowing the unit size you need is not always easy. The guide below will help you quickly decide which unit size is best ...

[Get Price](#)

Shed Sizes (Standard & Popular Dimensions)

One of those sizes is the smaller 8 by 6 feet, or 2.4 by 1.8 meters shed, covering an area of 48 square feet. Other popular sizes include the 6 by 4 feet or 1.8 by 1.2 meters, covering an area ...

[Get Price](#)



How Tall Should a Storage Shed Be

In this article, our shed experts go over how tall should a storage shed be and what is appropriate for your needs.

[Get Price](#)

Can a 1 8-meter-tall storage bed be used

A huge bed in a small bedroom can look out of place, as can a small bed in a huge room. A ratio of around 1:3 between bed and bedroom is sometimes said to look best,

[Get Price](#)

Contact Us

For catalog requests, pricing, or partnerships, please visit:
<https://k3gizycko.pl>

