

Can a 38v lithium battery be used with a 48v inverter



Overview

The short answer is no - proper inverter matching is crucial for optimal performance and safety. Let's examine the key compatibility factors for lithium battery and LiFePO4 battery systems. Lithium batteries require specific inverter features: Voltage Matching Must support your battery bank's. Before you decide to pair a lithium-ion battery with your existing inverter, it's essential to consider several factors. Connecting a lithium battery to an inverter is crucial for converting the stored DC (Direct Current) energy into usable AC (Alternating Current) for household or industrial applications.

Can a 38v lithium battery be used with a 48v inverter



Understanding the Basics of Connecting Lithium Batteries to Inverters

Ensure that the battery's voltage is within the range that the inverter supports. Most inverters are designed for 12V, 24V, or 48V systems, so the battery should match this requirement.

[Get Price](#)

48V vs. 51.2V

Acceptable battery voltage range: 38V - 66V (model-dependent, but generally accurate for the 48V Quattro). Designed to work with 16S LiFePO4 banks, and integrates well via VE.Bus BMS or Cerbo GX.



[Get Price](#)

 TAX FREE

Product Model

HJ-ESS-215A(100KW/215KWh)
HJ-ESS-115A(50KW/115KWh)

Dimensions

1600*1280*2200mm
1600*1200*2000mm

Rated Battery Capacity

215KWH/115KWH

Battery Cooling Method

Air Cooled/Liquid Cooled



ENERGY STORAGE SYSTEM

Can Lithium Batteries Work With Any Type of Inverter?

The short answer is no - proper inverter matching is crucial for optimal performance and safety. Let's examine the key compatibility factors for lithium battery and LiFePO4 battery systems.

[Get Price](#)

How do I match a lithium solar

battery with an inverter?

Matching a lithium solar battery with an inverter is a crucial step in setting up an efficient solar power system. As a supplier of lithium solar batteries, I've seen firsthand how the right ...

[Get Price](#)



Compatibility of Lithium-Ion Batteries with Existing Inverters

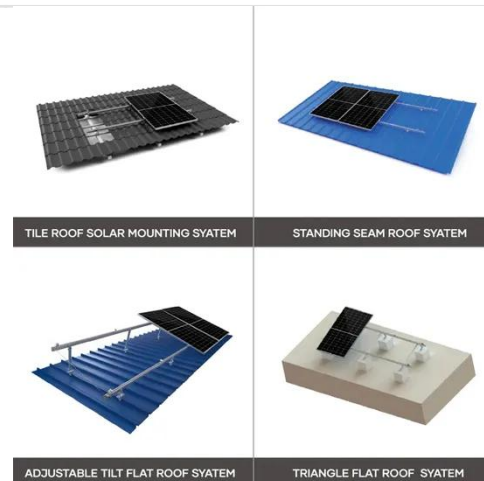
In summary, installing a lithium-ion battery with an existing inverter is not only feasible but also highly beneficial. From improved efficiency and performance to enhanced energy storage and reduced ...

[Get Price](#)

What Inverter Do I Need for a 48V Battery?

Many off-grid or solar system owners ask how to choose the right inverter for a 48V lithium battery setup. You need a 48V-rated pure sine wave or hybrid inverter that matches your load (in kW), supports ...

[Get Price](#)



How to Choose the Right Inverter for a Lithium Battery System

Choosing the wrong inverter for lithium battery use can lead to inefficiency,



system instability, or even battery damage. Unlike lead-acid systems, lithium batteries operate across a different voltage curve, ...

[Get Price](#)

Compatibility of Lithium-Ion Batteries with Existing ...

In summary, installing a lithium-ion battery with an existing ...

[Get Price](#)



Hybrid Inverter and Lithium Batteries: Setup Guide and Best Practices

Compatibility is the first and foremost consideration when setting up communication between a lithium battery and a hybrid inverter. Not all inverters are compatible with all lithium batteries.

[Get Price](#)

Importance of Compatibility Between Inverter and Lithium Battery

Lithium batteries are known for their

longevity, but their lifespan can be significantly shortened if paired with an incompatible inverter. Inverters that are not designed to work with lithium ...

[Get Price](#)



Can a 38v lithium battery be used with a 48v inverter

Integrating a solar inverter with a lithium battery can take your renewable energy setup to the next level. This combination allows for better energy storage, improved efficiency, and greater resilience during ...

[Get Price](#)

Contact Us

For catalog requests, pricing, or partnerships, please visit:
<https://k3gizycko.pl>

