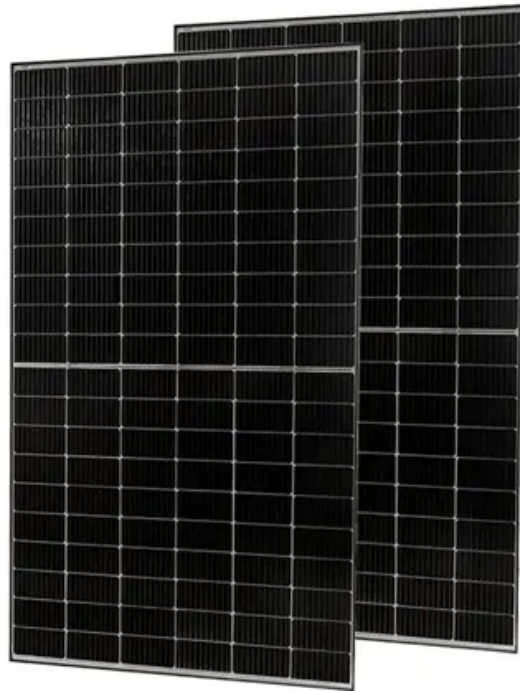


Comparison of 50kW Photovoltaic IP55 Outdoor Cabinet with Diesel Power Generation



Overview

296kWh long-life LFP battery (6000+ cycles) with high-efficiency solar charging and diesel backup, it delivers stable power while reducing operational costs and environmental impact. Its modular architecture allows flexible deployment for a range of applications, from commercial to industrial. Designed to support grid-tied and off-grid scenarios, the Hybrid ESS cabinet offers seamless integration and maximized space utilization, making it an ideal choice for growing energy. bution systems, environmental control systems, and fire control sy iority is self-generation and self-use, and surplus electricity storage. When the power generated by photovoltaic power generation i . The PIC50K55 50kW 55kWh Solar-Storage-Diesel Intelligent Energy Cabin is a modular hybrid power system designed to replace traditional diesel generators in off-grid, remote, and emergency scenarios. ↯ High. These systems are designed for outdoor commercial/industrial (C&I) applications, integrating lithium iron phosphate (LFP) battery technology with advanced energy management. Mainly used for renewables integration, peak shaving, backup power etc.

Comparison of 50kW Photovoltaic IP55 Outdoor Cabinet with Diesel



SolaX ESS-AELIO , C& I Energy Storage ESS Cabinet , 50kW/60kW

With support for 200% PV oversizing and a maximum 40A DC input current, the Hybrid ESS Cabinet ensures high throughput for large-scale solar integration. Global MPP scanning maximizes energy ...

[Get Price](#)

50kW/100kWh outdoor All-in-one all-in-one cabinet energy

50kW/100kWh outdoor cabinet ESS solution (KAC50DP-BC100DE) is designed for small to medium size of C& I energy storage and microgrid applications.



[Get Price](#)



50kW/100kWh Outdoor Cabinet Energy Storage System

It adopts door-mounted embedded integrated air conditioning, which does not occupy cabinet space, improves the available space of outdoor cabinets, has better structural integrity at the top, and has ...

[Get Price](#)

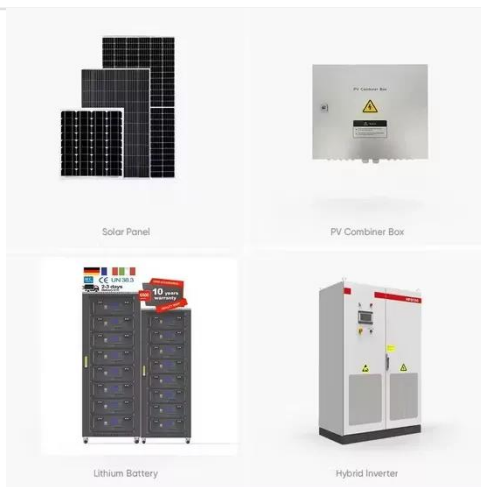
All-in-One Energy Storage System

100kWh LiFePO4 IP55 50kW Rated Power

Housed in a weather-resistant IP55 cabinet, it combines a 100kWh LiFePO4 battery pack with 50kW charge/discharge capability, supporting real-time monitoring and remote control via Ethernet, RS485, ...



[Get Price](#)



50kW/100kWh AIO ESS Cabinet

Supports self-consumption, peak-valley arbitrage, backup power, and other various scenarios. Max. DC input voltage. *The data sheet will be changed according to actual situation without prior notice.

[Get Price](#)

SUNWAY 50-100kW Outdoor Cabinet Energy Storage System With ...

The outdoor cabinet is weatherproof, easy to install, and built for long-term performance. With remote monitoring, after-sales service, and extended warranty, SUNWAY ensures stable power supply and ...



[Get Price](#)

50kW-100kWh Energy Storage System Outdoor Cabinet Battery ...

All-in-one 50kW/100kWh ESS cabinet for solar storage, backup, and peak shaving. Outdoor-rated, air-cooled, and easy to

install with full EMS control.

[Get Price](#)



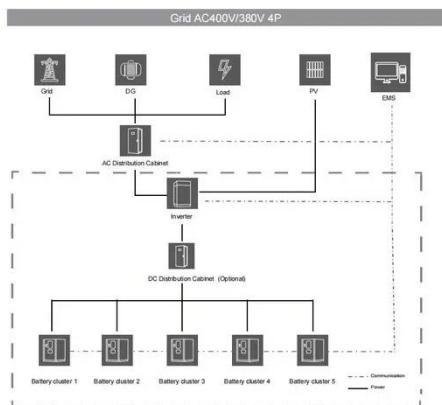
Sunrange Energy Storage Cabinet IP55 50kwh 80kwh 100kwh ...

We're an emerging brand in the photovoltaic industry. Sunranger's customers are located on all continents. We provide the highest quality products and the most professional services.



1075KWHH ESS

[Get Price](#)



PIC50K55 50kW 55kWh Solar-Storage-Diesel Cabin , 55.296kWh ...

Integrating a 55.296kWh long-life LFP battery (6000+ cycles) with high-efficiency solar charging and diesel backup, it delivers stable power while reducing operational costs and environmental impact.

[Get Price](#)

Outdoor ODM BESS Energy Storage System , 50-100kWh Cabinet

Looking for an ODM BESS energy storage system? Our all-in-one outdoor cabinet

(50-100kWh) features an IP55 design, LFP cells, and easy expansion for C& I applications.

[Get Price](#)



Contact Us

For catalog requests, pricing, or partnerships, please visit:
<https://k3gizycko.pl>

