

Distance from wireless communication terminal to base station



Overview

In the wireless communications, it is important to know the number of user terminals in a certain area for controlling user terminals [1]. It is based on the group delay. The present-day tele-space is incomplete without the base stations as these constitute an important part of the modern-day scheme of wireless communications. They are referred to as cell towers or cellular antennas. Google (Huawei) Nexus 6P [2015] A phone with a 12.3 MP camera and an aluminum body, running on Android 6. A typical base station consists of three main parts: Antenna: The antenna transmits and receives radio signals.

Distance from wireless communication terminal to base station



What are Base Station in Telecommunications?

Base stations contain several key parts. The antenna sends and receives radio energy. The transceiver handles signal modulation. The baseband processor converts signals to digital form. ...

[Get Price](#)

What Is a Base Station? Definition and How It Works

Base stations are deployed in various forms, depending on the required coverage area and user density. The most recognizable form is the macro-cell base station, which features tall, free ...



[Get Price](#)



The Base Station in Wireless Communications: The Key to Modern

If necessary, an automatic change of station occurs, called handover, i.e. switching the radio connection to another base station. The range of a cell (i.e. the area where one base station ...

[Get Price](#)

Throughput vs. distance between

base station (BS) and user terminal

Throughput vs. distance between base station (BS) and user terminal (UT) with and without calibration, and with channel state information (CSI) feedback.

[Get Price](#)



Base Stations

Base stations form a key part of modern wireless communication networks because they offer some crucial advantages, such as wide coverage, continuous communications and an array of ...

[Get Price](#)

Terminal, wireless communication method, and base station

According to one aspect of the present disclosure, it is possible to appropriately determine information related to QCL. The present disclosure relates to a terminal, a radio communication

[Get Price](#)



Distance Estimation between Base Station and User Terminal ...

Abstract - We discuss the distance estimation between the base station and user terminal in wireless communications using multi-carrier

signal. In this paper, we propose a method to reduce the ...

[Get Price](#)



Mobile Base Station Roles and Radiation vs Distance

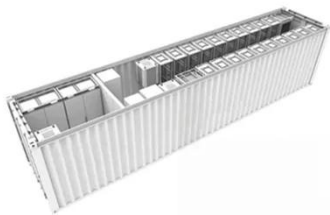
Radio signals from a base station propagate through space and are subject to path loss, attenuation, and scattering. As distance from the antenna decreases, the received power density ...

[Get Price](#)



 **TAX FREE**

**1-3MWh
BESS**



Types and Applications of Mobile Communication Base Stations

A macro base station refers to a wireless signal transmitting base station of a communication operator. A macro base station has a large coverage distance, generally 35 km, and ...

[Get Price](#)

Contact Us

For catalog requests, pricing, or partnerships, please visit:
<https://k3gizycko.pl>

