

# Gw12kt inverter



## Gw12kt inverter



### GoodWe GW12KT-DT , Inverters , sun.store

The GoodWe SDT Series is one of the best options available on the residential & commercial segments thanks to its technical strengths that make it one of the most efficient in the market. For enhanced ...

[Get Price](#)

### Goodwe GW12KT-DT (+DC-SWITCH/WIFI)

Featuring 2 MPPT and 3 string inputs, the GW12KT-DT (+DC-SWITCH/WIFI) inverter is equipped to handle an array of solar panel configurations, allowing for maximum power generation under any ...

[Get Price](#)



### Goodwe GW12KT-DT - rasuni

Goodwe GW12KT-DT 4-15KW , Three Phase , 2 MPPT The SDT G2 series of inverter from GoodWe is one of the best options available in the residential & commercial sectors owing to its technical ...

[Get Price](#)



## Solar Inverters

GoodWe is a leading solar inverter manufacturer specializing in residential and commercial solar inverters ranging from 0.7kW to 250kW.

[Get Price](#)



### **GoodWe SDT G2 GW12KT-DT 12kW 3-Phase Solar Inverter ...**

Information about GoodWe SDT G2 GW12KT-DT 12 kW Three-Phase Solar Inverter High-quality, high-efficiency solar inverter for residential and commercial installations. Easy to install, handle, and ...

[Get Price](#)

### **On grid inverter Goodwe GW12KT-DT 12000W**

Technical data - On grid inverter Goodwe GW12KT-DT 12000W Inverter Type On-grid Protection Class IP-65 Number of MPPTs 2 Maximum DC Voltage 1000 V Display LCD/LED Number of phases Three ...

[Get Price](#)



### **GoodWe Grid tied inverter, 3-phase, 2 MPPT, Wifi, 12kW**

The GoodWe Grid-Tied Inverter is a high-performance 3-phase inverter designed



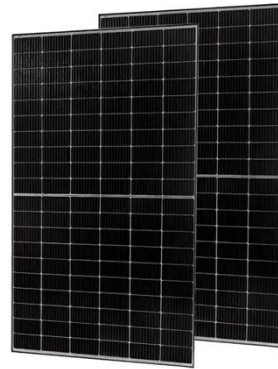
to maximise energy conversion efficiency in commercial and residential solar power systems. Equipped with dual MPPTs ...

[Get Price](#)

---

### **GW12KT-DT (+DC-SWITCH/WIFI) , 8233484**

Product information "GW12KT-DT (+DC-SWITCH/WIFI)" The SDT G2 series of inverter from GoodWe is one of the best options available in the residential & commercial sectors owing to its technical ...



[Get Price](#)



### **Goodwe GW12KT-DT**

AC output power: 12000W Max. PV input Voltage: 1000V Euro efficiency: 97,7% Protection rating: IP65 W x D x H: 354 x 433 x 155 mm Manufacturer Warranty: 5 ye

[Get Price](#)

---

### **GoodWe GW12KT-DT 3-phase Solar Inverter**

GoodWe GW12KT-DT 3-phase Solar Inverter GoodWe SDT G2 series three phase, 2-MPPT solar inverter is one of

the best options available in the residential & commercial sectors owing to its ...

[Get Price](#)



## Contact Us

---

For catalog requests, pricing, or partnerships, please visit:  
<https://k3gizycko.pl>

