

How to check the voltage of the inverter



How to check the voltage of the inverter



6 ways to test whether the inverter is working properly

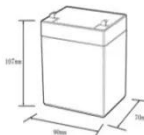

Many modern inverters now include digital screens to give you more information about operating status. This can help you identify any issues as you will be able to check information such as input voltage, ...

[Get Price](#)

How to Test an Inverter: A Step-by-Step Guide , Mingch

Every inverter is designed for a specific voltage range (e.g., 12V, 24V, or 48V DC). Using your multimeter: Check that the input voltage matches the inverter's rated specification. If testing with ...

[Get Price](#)


12.8V6Ah

- Nominal voltage (V):12.8
- Nominal capacity (ah):6
- Rated energy (WH):76.8
- Maximum charging voltage (V):14.6
- Maximum charging current (a):6
- Floating charge voltage (V):13.6-13.8
- Maximum continuous discharge current (a):10
- Maximum peak discharge current @10 seconds (a):20
- Maximum load power (W):100
- Discharge cut-off voltage (V):10.8
- Charging temperature (°C):-50
- Discharge temperature (°C):-20-+60
- Working humidity: <95% R.H (non condensing)
- Number of cycles (25 °C, 0.5c, 100%dod): >2000
- Cell combination mode: 32700-4s1p
- Terminal specification: T2 (6.3mm)
- Protection grade: IP65
- Overall dimension (mm):50*70*107mm
- Reference weight (kg):0.7
- Certification: un38.3/msds



How To Perform Inverter Testing for Optimal Performa

Electrical testing is at the core of inverter performance evaluation. Begin by measuring the DC voltage and current input to ensure that the inverter is receiving power within the correct ...

[Get Price](#)

How to Measure Voltage and

Current in an Inverter: A Step-by-Step ...

Summary: Learn how to accurately measure voltage and current in inverters for solar systems, industrial applications, and residential energy storage. This guide covers tools, safety tips, and real-world ...

[Get Price](#)



How to Test an Inverter

When measuring the voltage and current on the primary side of an inverter, distortions in waveforms can cause differences in measured values. Consequently, it's necessary to use a true RMS voltmeter ...

[Get Price](#)

How to Test a Power Inverter (Find and Fix These ...

In this article you will learn how to test an inverter. Make sure your equipment is running efficiently by spotting these problems.

[Get Price](#)



How to Test Inverter with Digital Multimeter

In this guide, we explain how to test an inverter with a multimeter step by step, focusing on the power input, DC bus voltage, IGBT modules, capacitors, and



output terminals.

[Get Price](#)

How to Test an Inverter with Multimeter? - A Practical Guide

Using a multimeter, you can accurately measure DC input voltage, AC output voltage and frequency, and assess the inverter's response under varying loads. Understanding the implications of ...

[Get Price](#)



How To Test A Power Inverter With Multimeter?

Once you've confirmed that your power source is healthy and the DC input cables are providing sufficient, stable voltage to the inverter, the next logical step is to test the inverter's primary ...

[Get Price](#)

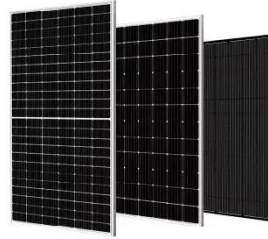


How to Test an Inverter Generator? , inverter

Output voltage and current test: Switch the multimeter to the appropriate range and measure the output voltage and current of the inverter generator

respectively. Compare the ...

[Get Price](#)



Contact Us

For catalog requests, pricing, or partnerships, please visit:
<https://k3gizycko.pl>

