

# Outdoor solar power hub protection level



## Overview

---

An IP Rating defines a device's protection level against dust and water. IP35 and IP44 are essential for protecting expensive inverters, charge controllers, and monitoring equipment from voltage transients that occur daily in photovoltaic installations. Every solar system experiences voltage surges. Because solar equipment is installed outdoors and exposed to rain, dust, humidity, and temperature cycles, IP ratings help solar designers, EPCs, installers, and engineers determine whether a device can withstand harsh environmental conditions. Sometimes called the International Protection rating, it is defined by the International Electrotechnical Commission (IEC) under the international standard EN 60529 (British Standard BS EN 60529). Surge protection is essential for solar installations, safeguarding inverters, batteries, and wiring from lightning, grid disturbances, and transient overvoltages. This guide reviews five standout products designed to shield outdoor solar arrays while enduring harsh weather.

## Outdoor solar power hub protection level

---



### Best Surge Protection for Solar Panels: Top Picks for Outdoor ...

Surge protection is essential for solar installations, safeguarding inverters, batteries, and wiring from lightning, grid disturbances, and transient overvoltages. This guide reviews five standout ...

[Get Price](#)

---

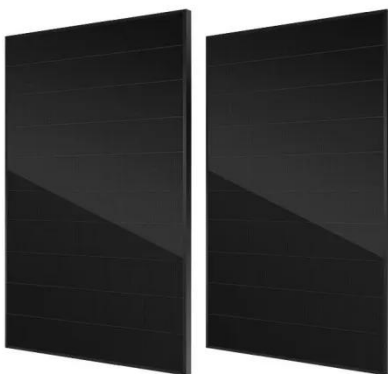
### IP Rating -- How Water & Dust Protection Affects Solar Equipment

Because solar equipment is installed outdoors and exposed to rain, dust, humidity, and temperature cycles, IP ratings help solar designers, EPCs, installers, and engineers determine whether a device ...



[Get Price](#)

---



### Surge Protection for Solar Systems: SPD Type Selection Matrix 2025

Voltage Protection Level: Typically 1.5-2.5kV for 230V AC systems, 2.5-4.0kV for 600V DC systems.  
 Installation Location: Service entrance panel, main distribution board, or solar array ...

[Get Price](#)

---

## Choosing the Right DC SPD for Solar Applications

In solar/PV applications, SPDs could be classified into three types based on their resistance: Type 1, Type 2, and Type 1+2. Type 1 SPD: Cope with a direct strike which brings an ...

[Get Price](#)



## Outdoor Electrical Box: Complete Guide for Solar PV 2025

Understanding IP ratings is essential for specifying appropriate outdoor electrical boxes for solar installations. The IP rating consists of two digits following "IP": the first digit indicates solid ...

[Get Price](#)

## Solar Surge Protector Guide: Complete System ...

Complete guide to solar surge protectors. Learn types, installation, costs & protect your solar investment from lightning damage in 2025.

[Get Price](#)

## 12.8V 200Ah



## What IP ratings mean for rainproof solar generators' safety

The right IP level does more than keep water out. It reduces short-circuit risk, limits corrosion, and keeps overcurrent protection reliable during storms and



washdowns.

[Get Price](#)

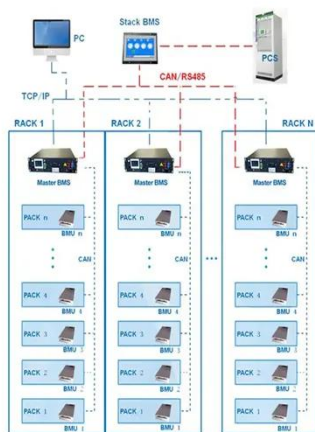
## A GUIDE TO INGRESS PROTECTION RATINGS FOR ...

Equipment that has been designed hardened for outdoor use will perform well in an enclosure rated to IP54. It will give a good level of protection from airborne dust and splashing rain. IP54 allows some ...



[Get Price](#)

BMS Wiring Diagram



## A Comprehensive Guide to Solar Surge Protection Devices (Solar ...

This guide will walk you through everything you need to know about Solar Surge Protection Devices (Solar SPDs): what they are, why they matter, and how to choose the right one ...

[Get Price](#)

## Solar PV System Protection: A Complete Guide to ...

Learn solar PV system protection with DC breakers, fuses, and SPDs. Prevent costly equipment damage from electrical

faults and surges.

[Get Price](#)



---

## Contact Us

For catalog requests, pricing, or partnerships, please visit:  
<https://k3gizycko.pl>

