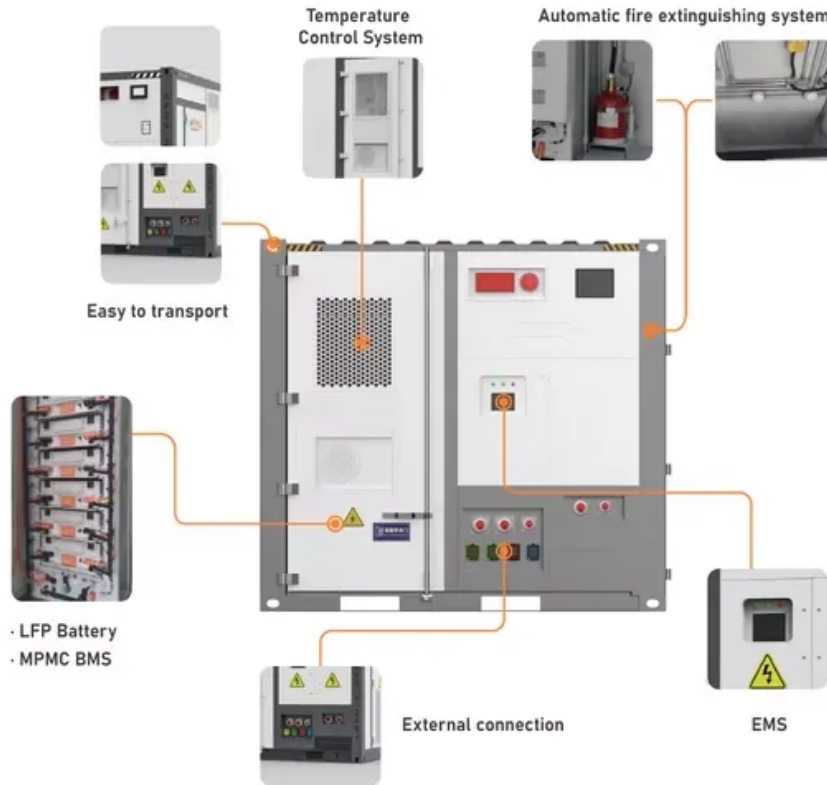
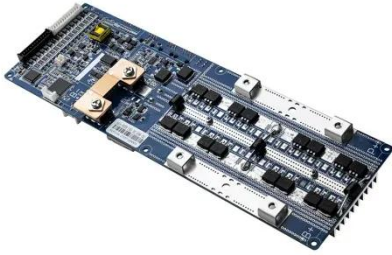


Power station output voltage



Power station output voltage



What is the output voltage of a power station?

Power stations produce electricity at 25,000 volts (V). Step-up transformers change the voltage to the very high values needed to transmit electricity through the National Grid power lines.

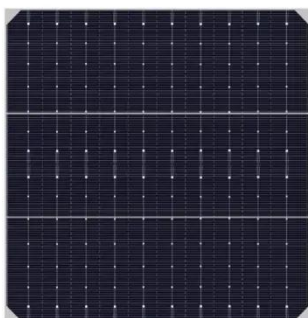
[Get Price](#)

Power Generation Voltage , Swartz Engineering

Power generation voltage refers to the electrical voltage produced at power plants by generators. This voltage is created through the conversion of mechanical energy into electrical energy, typically via ...



[Get Price](#)



Power Generation Systems

An AC generator's output voltage fluctuates according on the output load and power factor. A voltage regulator keeps the generator's output voltage at a fixed level, guaranteeing continuous power quality ...

[Get Price](#)

What is the output voltage of the

energy storage power station?

Energy storage power stations utilize various technologies, such as batteries, pumped hydro, and flywheels, each with distinct characteristics influencing their output voltage levels.

[Get Price](#)



High, Medium & Low Generator Voltage Explained

Learn the key differences between high, medium, and low generator voltage for industrial and commercial applications.

[Get Price](#)

How do power companies regulate power plant's ...

Voltage measurements on the grid are only used to select which ...

[Get Price](#)



What is generated voltage at power plants?

The generated voltage at power plants is the voltage produced by alternators or generators before it is transmitted through power lines. Usually, the voltage



generated at power ...

[Get Price](#)

How do power companies regulate power plant's voltage output?

Voltage measurements on the grid are only used to select which gas turbine power plant is preferred - that one where the voltage is lowest. Voltage can rise or fall in a band of $\pm 10\%$, while ...



[Get Price](#)



Explanation of Phases & Voltage Options for Industrial Power ...

Choose the right industrial generator phase and voltage. Learn the differences between single-phase and three-phase, and how conversion impacts power output.

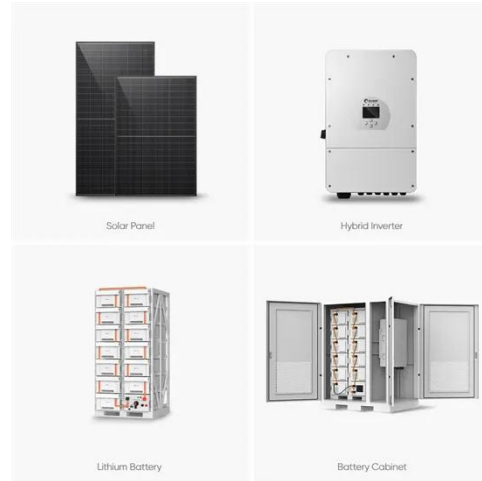
[Get Price](#)

Solved: What is the typical voltage range of power plant output?

Power plants typically generate electricity at high voltages to efficiently transmit it over long distances. The voltage range for power plant output is

commonly in the thousands of volts,
specifically between ...

[Get Price](#)



MC Electrical Generators for Power Plants R

Terminal voltage ratings for power plant generators depend on the size of the generators and their application. Generally, the larger the generator, the higher is the voltage.

[Get Price](#)

Contact Us

For catalog requests, pricing, or partnerships, please visit:
<https://k3gizycko.pl>

