

# Solar power generation construction project land



## Overview

---

The tables below provide a current list of active renewable energy projects as follows: Additional information can be found by clicking on the project name, or by viewing the public MLRS Reports. List of Acronyms Used on This Page These tables represent recently approved. This research aims to address these challenges by providing insights into the construction process of solar farms. The concept of solar farms dates back to the late 20th century, gaining prominence after technological advancements and increased energy costs. Past studies have explored various. In a landmark accord, major solar developers, conservation groups, agricultural organizations, environmental and environmental justice groups, and tribal entities announced today their agreement to advance large-scale U. solar development while championing land conservation and supporting local. The BLM continually receives proposals for utility-scale wind, solar, and gen-tie line projects on public land, which are in various stages of review or implementation. Applications for wind energy, and solar energy, and gen-tie projects may be processed and authorized as rights-of-way under Title. Ground-based, utility-scale solar panel installations used for electricity generation of 1 MW or greater are commonly referred to as 'solar farms' (US Energy Information Administration, 2020).

## Solar power generation construction project land



### Land-Use Requirements for Solar Power Plants in the United ...

Land-Use Requirements for Solar Power Plants in the United States. NREL is a national laboratory of the U.S. Department of Energy Office of Energy Efficiency & Renewable Energy Operated by the ...

[Get Price](#)

### Active Solar and Wind Projects

The BLM continually receives proposals for utility-scale wind, solar, and gen-tie line projects on public land, which are in various stages of review or implementation.

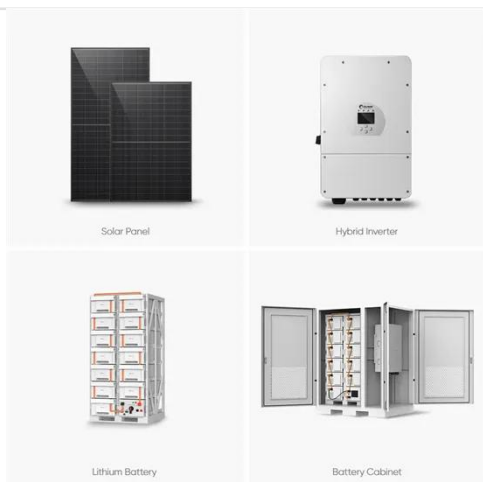
[Get Price](#)

### Home Energy Storage (Stackble system)



**Product Introduction**

- 1 Scalable from 10 kWh to 30 kWh
- 2 Self-Consumption Optimization
- 3 Integrated with inverter to avoid the compatibility problem
- 4 LFP battery, safest and long cycle life
- 5 Stackable design, effortless installation
- 6 Capable of High-Powered Emergency-Backup and Off-Grid Function



### Conservation Considerations for Solar Farms

Consider solar development using existing buildings, structures, idle or marginal lands, or water bodies such as irrigation ditches. Establishment and maintenance of perennial vegetation is paramount for ...

[Get Price](#)

### Permitting and Land Use , The Law

## of Solar Guide

Explore the essential permitting and land use requirements for constructing solar energy facilities, including state and local siting authority, regulatory approvals, and potential challenges.

[Get Price](#)



## Building a solar farm: design steps and 10 best ...

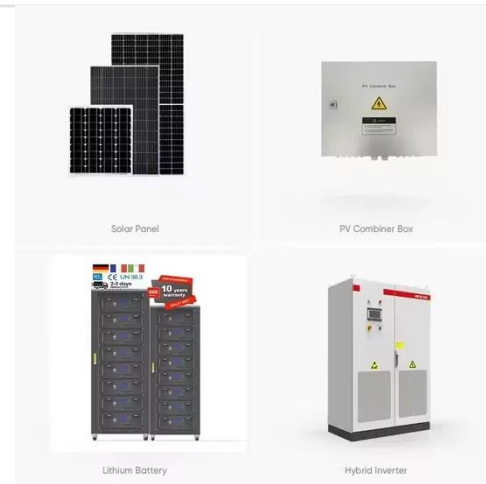
Learn the key steps in building a solar farm, from planning to PV design. Discover how to avoid delays and bring your solar project to life.

[Get Price](#)

## The Solar Project Development Process: A Comprehensive Guide

The solar project development process involves a detailed, multi-phase approach, including site selection, regulatory approvals, system design, financing, construction, testing, and ...

[Get Price](#)



## Site Considerations , US EPA

This page describes the importance of assessing a potential site for a renewable electricity project including the site's technical, economic, policy, and other variables.

[Get Price](#)

## Large-Scale Solar Siting Resources , Department of Energy

Deciding where solar projects will be installed is one of the very first decisions to be made in a project development timeline. Explore the many factors to consider when selecting a site.

[Get Price](#)

## Site Considerations , US EPA

Available Sites and Project Types  
Technical Feasibility  
Economic Considerations  
Policy Considerations  
Additional Resources  
When assessing a renewable electricity site and creating a list of possible project locations, consider the types of project options available and the site elements they would require. It can be useful to start by creating a list of several potential locations that could serve your project needs. For instance, a solar photovoltaic project could be See more on [epa.gov/nrel.gov](http://epa.gov/nrel.gov) [PDF]

## Land-Use Requirements for

## Solar Power Plants in the United ...

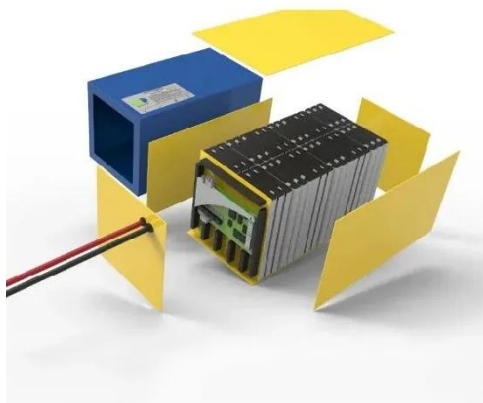
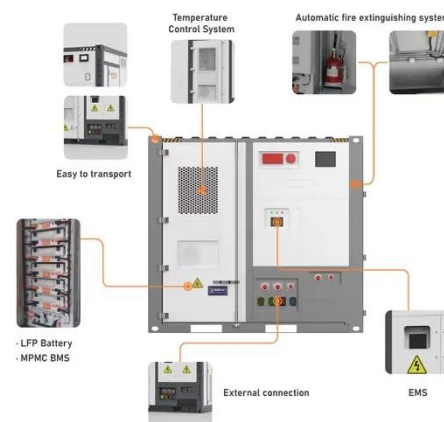
Land-Use Requirements for Solar Power Plants in the United States. NREL is a national laboratory of the U.S. Department of Energy Office of Energy Efficiency & Renewable Energy Operated by the ...

[Get Price](#)

### The Comprehensive Guide to Solar Farm Construction

Explore the detailed solar farm construction process, covering site assessments, regulatory needs, and crucial stakeholder engagement. ??

[Get Price](#)



### Land Use & Solar Development - SEIA

Like fossil fuel power plants, solar plant development requires some grading of land and clearing of vegetation. However, as utility-scale photovoltaics (PV) technology has improved over the last ...

[Get Price](#)

## Contact Us

For catalog requests, pricing, or partnerships, please visit:  
<https://k3gizycko.pl>

