

The angle of photovoltaic panel installation on the roof



Overview

The ideal roof pitch for solar panels typically ranges from 30 to 40 degrees. This angle maximizes energy harvest and ensures panels are oriented correctly towards the sun, improving solar energy production. This guide explains how tilt and orientation influence production, provides practical rules of thumb for typical American homes, and compares fixed rooftop mounts with. The roof pitches in order to design the optimal angle of the structure. It will be necessary to ensure that this surface is an easily. Tilt angle is defined as the number of degrees your array orients from the ground so it can face the sun. Solar panels produce energy most efficiently when sunlight hits them directly, so adjusting the tilt angle to align with the sun's position can significantly boost power output.

The angle of photovoltaic panel installation on the roof



Solar panel inclination angle, location and orientation

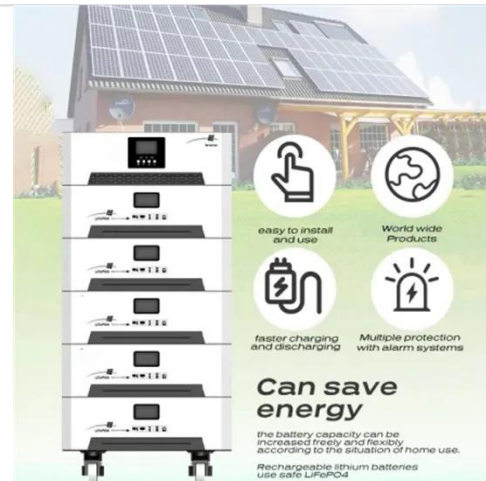
Learn what goes into determining the best angle for solar panels to optimize energy output and how you can ensure your solar system is designed ...

[Get Price](#)

Understanding Roof Pitch and Solar Panel Angles for Better Energy ...

Solar panels should be installed at angles that correspond to the roof pitch for the best energy efficiency. For a roof pitch of 20 degrees, optimal solar panel angles range from 30 to 35 ...

[Get Price](#)



Optimal Roof Angle for Solar Panels: A Practical Guide to Performance

Determining the optimal roof angle for solar panels on a specific home involves several practical steps. First, identify the roof's orientation and pitch using architectural plans or a roof ...

[Get Price](#)

What's the Best Angle for Solar Panels to Get Maximum Output?

Learn what goes into determining the best angle for solar panels to optimize energy output and how you can ensure your solar system is designed to maximize efficiency of your solar ...

[Get Price](#)



Best Roof Slope for Solar Panels: Optimal Angles and Practical

Choosing the right roof slope for solar panels affects energy production, installation cost, and long-term performance. This guide explains how roof pitch, geographic location, seasonal sun ...

[Get Price](#)

The Best Angle for Solar Panel Installation

In general, solar panels should be installed so the sunlight hits them at as close to a perpendicular 90-degree angle for as long as possible during the day. To achieve that goal, most ...

[Get Price](#)



Solar panel inclination angle, location and orientation

Optimization of the inclination, orientation and location of photovoltaic solar panels and solar collectors in a



solar installation to maximize the use of renewable energy.

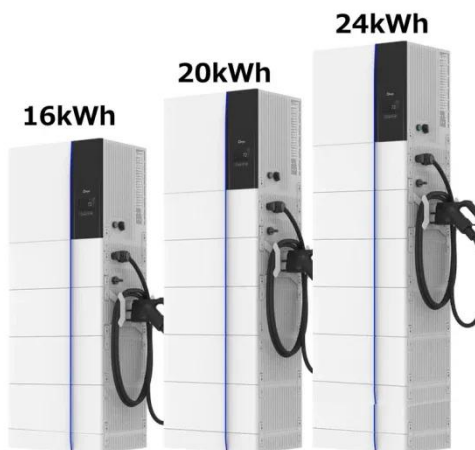
[Get Price](#)

Optimizing Roof Angle And Orientation For Solar Installation

Solar panels produce energy most efficiently when sunlight hits them directly, so adjusting the tilt angle to align with the sun's position can significantly boost power output. Ideally, the angle of ...

[Get Price](#)

FLEXIBLE SETTING OF MULTIPLE WORKING MODES



Solar Panel Angle & Tilt Calculator (2026 Guide) , Roof Pitch Chart

Most homeowners should choose the Year-Round angle. Choose Winter only if you are off-grid and need to maximize charging during short days. Being 5-10 degrees "flatter" than perfect is often better ...

[Get Price](#)

Best Angle for Solar Panel Installation: Complete Guide 2025

Getting the tilt right can boost your system's efficiency by 20-25%. As a

general rule, tilt angle = latitude. This keeps panels aligned with the solar altitude angle (the height of the sun above the horizon). If ...

[Get Price](#)



What Is the Best Angle for Solar Panels?

What Is the Best Angle for Solar Panels? From roof pitch to seasonal sunlight, several factors influence the best angle for solar panels. Use our guide to get the most out of your solar ...

[Get Price](#)

Contact Us

For catalog requests, pricing, or partnerships, please visit:
<https://k3gizycko.pl>

