

# Uninterruptible power supply requirements for fire lighting



## Overview

---

NFPA 110 sets the standard for emergency and standby power systems, particularly those that supply power during outages. It covers installation, performance, testing, and maintenance requirements for systems that support life safety equipment—like exit signs and emergency lights. There are a few different options when it comes to choosing a reliable power supply, as well as some calculations that are necessary to ensure that the fire alarm system is provided with sufficient backup power.

## Uninterruptible power supply requirements for fire lighting

---



### Apply for a Credit Card Online from Discover

How can I apply for a credit card from Discover? You can apply for most Discover credit cards at Discover or by calling 1-800-DISCOVER (1-800-347-2683). Keep in mind that you must be at ...

[Get Price](#)

---

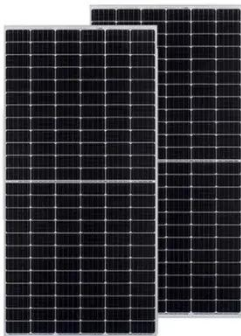
### How to Choose From Discover® Card Options

You may already have an idea of what type of credit card you want. But learning about each Discover Card, including which ones you might get approval for, can make it easier to choose ...



[Get Price](#)

---



### Storage Batteries and UPS , UpCodes

Storage batteries and uninterruptible power supplies (UPS) must be appropriately rated to provide emergency lighting for at least 1.5 hours, ensuring that the voltage remains above 87.5% of the ...

[Get Price](#)

---

## Guide to Fire Alarm Basics: Power Supplies

There are a few different options when it comes to choosing a reliable power supply, as well as some calculations that are necessary to ensure that the fire alarm system is provided with ...

[Get Price](#)



## NFPA 110: Emergency and Standby Power Systems Standard Guide ...

This standard covers the installation, maintenance, operation, and testing of systems that provide an alternate source of electrical power in buildings and facilities when the normal electrical power source ...

[Get Price](#)

## Backup Power Solutions for: Emergency Lighting Applications

Compliant building lighting must provide at least 90 minutes (UL924) of battery powered illumination, even under extreme conditions such as electrical surges and full loads, to ensure building occupants ...

[Get Price](#)



## Emergency Power Distribution Equipment

NEC Article 700 requires emergency systems to be designed to automatically



supply power for exit lighting, fire detection and alarm systems, elevators, fire pumps, and public safety communications ...

[Get Price](#)

### Credit Card Benefits , Discover Card

We'll help you take advantage of your Discover ® Card benefits We keep it simple for you with no annual fee, comprehensive protection, and more.

[Get Price](#)



### Rewards Credit Cards

Learn about different types of rewards credit cards such as cash back, travel, and points rewards cards, and how to choose the best rewards credit card for you.

[Get Price](#)

### Discover it® Cash Back Credit Card , Apply in Minutes

Find out which credit cards you may qualify for with our online credit card-pre-approval tool - checking doesn't impact your credit score and can personalize

your offer.

[Get Price](#)



### Secure Message Account Center Landing :: Capital One

Register for Discover Card Account Center It's quick and easy: register for the Account Center now for online access to your Discover Card account so you can: Get a current Account Summary Review ...

[Get Price](#)

### Register Your Discover Account for Online Access , Discover

Credit Card Features Balance Transfer  
Credit Cards Credit Cards to Build Credit  
No Annual Fee Credit Cards Intro APR  
Credit Cards Credit Cards for No Credit  
Instant Use Credit Cards

[Get Price](#)



### THE NO-NONSENSE GUIDE TO NFPA 110 COMPLIANCE FOR ...

In this guide, we'll explore what NFPA 110 is, and what to consider when implementing and maintaining your

facility's emergency power system.

[Get Price](#)



### Cash Back Credit Cards

Learn about Discover it® cash back credit cards and consider benefits like Discover Cashback Match when choosing the best cash back credit card for you.

[Get Price](#)


TAX FREE






**Product Model**  
 HJ-ESS-215A(100KW/215KWh)  
 HJ-ESS-115A(50KW 115KWh)

**Dimensions**  
 1600\*1280\*2200mm  
 1600\*1200\*2000mm

**Rated Battery Capacity**  
 215KWH/115KWH

**Battery Cooling Method**  
 Air Cooled/Liquid Cooled





### Uninterruptible Power Supply Emergency Lighting

During emergencies such as natural disasters, fires, or power grid failures, having dependable lighting is critical. Uninterruptible Power Supply Emergency Lighting ensures that hallways, stairwells, and exit ...

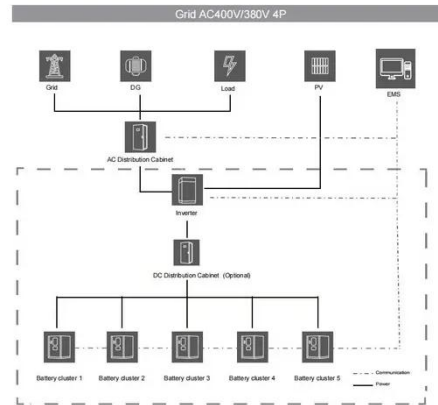
[Get Price](#)

### 26 32 33 Uninterruptible Power Supply (UPS) for Emergency ...

See Standard Drawing, ES71, Emergency Lighting UPS Single-Line Diagram for details. The UPS system shall include a

UPS cabinet, external maintenance bypass cabinet (MBC), battery cabinet,  
...

[Get Price](#)



## NFPA 110 Compliance Guide - Emergency Power for Exit Signs & Lighting

NFPA 110 sets the standard for emergency and standby power systems, particularly those that supply power during outages. It covers installation, performance, testing, and maintenance requirements for ...

[Get Price](#)

## How to power emergency illumination systems

The 2023 edition of NFPA 70, Article 700 requires that at least two sources of power must be provided for emergency lighting: One normal supply and one or more of the emergency ...

[Get Price](#)



## Credit Card Login , Discover Card

Log in to your Discover Card account securely. Check your balance, pay bills, review transactions and more using the



Discover Account Center, 24 hours a day, seven days a week.

[Get Price](#)

---

## Contact Us

For catalog requests, pricing, or partnerships, please visit:  
<https://k3gizycko.pl>

