

What are the wind power sources for China's communication base stations



Overview

Solar panels generate electricity under sunlight, and through charge controllers and inverters, they supply power to the equipment of communication base stations, with batteries acting as energy storage units to ensure power supply during nights or overcast days. In the context of carbon neutrality, renewable energy, especially wind power, solar PV and hydropower, will become the most important power sources in the future low-carbon power system. By using a mix of renewable energy and conventional sources, hybrid systems balance the cost-efficiency of renewables with the reliability of. Low-carbon upgrading to China's communications base stations We optimize the power supply configuration for communication base stations to minimize construction and electricity expenses nationwide. Design of an off-grid hybrid PV/wind power system for. This reduces emissions, aligns with sustainability goals, and even opens up opportunities for carbon credits or green.

The Importance of Renewable Energy for ...

The chapter details modern energy-efficient technologies and methods of using renewable energy sources, the implementation of which is ...

[Get Price](#)

DETAILS AND PACKAGING



1 USER MANUAL PDF 2 RJ45 Cable For RS485/CAN 3 Battery in Parallel Cables
4 RJ45 TO USB Monitor Cable 5 M8 Terminal*4



- IP65/IP55 OUTDOOR CABINET
- OUTDOOR TELECOM CABINET
- OUTDOOR ENERGY STORAGE CABINET
- 19 INCH

The Importance of Renewable Energy for Telecommunications Base Stations

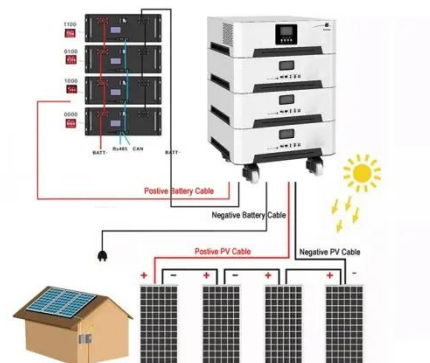
The chapter details modern energy-efficient technologies and methods of using renewable energy sources, the implementation of which is envisaged in the framework of the optimal ...

[Get Price](#)

What is wind power for China's communication base stations

Based on the distribution of wind turbines in the wind farms and their internal layouts, the company chose to build 5G base stations on peripheral wind turbines to expand

[Get Price](#)



Low-carbon upgrading to China's communications base stations for

We optimize the power supply configuration for communication base stations to minimize construction and



electricity expenses nationwide. The results show that low-carbon upgrades can ...

[Get Price](#)

What communication base stations does China Communications use ...

To address the energy consumption issues of communication base stations, we have implemented a series of measures to transform traditional base stations into low-carbon base stations.



[Get Price](#)



Ranking of communication base stations and wind power in various ...

Every off-grid base station has a diesel generator up to 4 kW to provide electricity for the electronic equipment involved. The presentation will give attention to the requirements on using ...

[Get Price](#)

China s latest wind-solar hybrid project for communication base ...

Here we adopt 5kW wind turbine together with 5kW solar module as the new energy power supply system, it can

fully meet the need of those small base station for 24 hours continuous working.

[Get Price](#)



The connection between communication base station and wind ...

Hybrid energy solutions enable telecom base stations to run primarily on renewable energy sources, like solar and wind, with the diesel generator as a last resort. This reduces emissions, aligns with ...

[Get Price](#)

Contact Us

For catalog requests, pricing, or partnerships, please visit:
<https://k3gizycko.pl>

