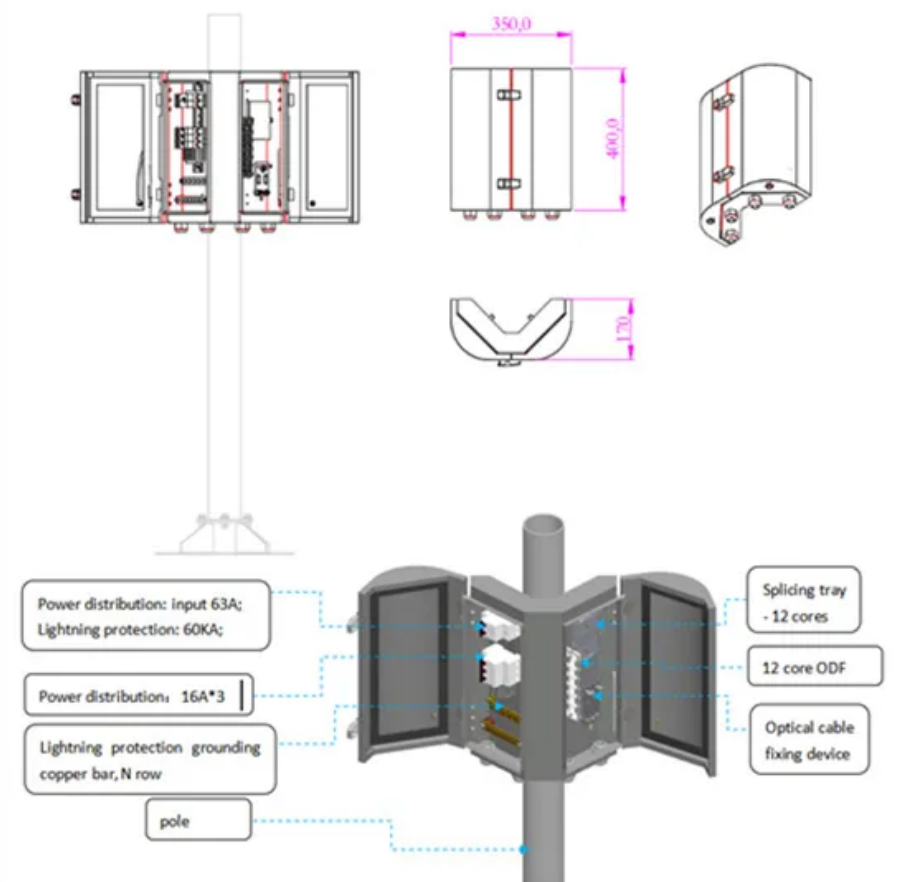


# What does wind power for communication base stations mainly consist of



## Overview

---

Wind power stations use the wind to turn a turbine which turns a magnet inside a coil (a type of generator). The wind has kinetic energy (movement energy) which is changed into mechanical energy by the blades on the turbine. The turbine then turns a generator which creates. 5G base stations (BSs), which are the essential parts of the 5G network, are important user-side flexible resources in demand response (DR) for electric power system. Improved Model of Base Station Power System for the. This reduces emissions, aligns with sustainability goals, and even opens up opportunities for carbon credits or green. If all of the channel capacity of a BS is occupied, a user cannot access this BS and must instead access another BS that is farther away.

## What does wind power for communication base stations mainly consist of?

---



### **(PDF) Small windturbines for telecom base stations**

Every off-grid base station has a diesel generator up to 4 kW to provide electricity for the electronic equipment involved. The presentation will give attention to the requirements on using

[Get Price](#)

---

### **What are the wind power algorithms for communication base ...**

In rural or remote areas, where power from the grid is unavailable or unreliable, these cell sites require generator sets to provide power security as prime power or backup standby power.



[Get Price](#)

---

### **How to build wind power stations for communication base stations**

Communication Base Station Energy Power Supply System The wind-solar-diesel hybrid power supply system of the communication base station is composed of a wind turbine, a solar cell module, an integrated ...



[Get Price](#)

---

## **Introduction to communication base**

## station wind power equipment

Every off-grid base station has a diesel generator up to 4 kW to provide electricity for the electronic equipment involved. The presentation will give attention to the requirements on using windenergy as an energy source ...

[Get Price](#)



## Communication base station wind power access network

Figure 1 illustrates the equipment composition of a typical 5G communication base station, which mainly consists of 2 aspects: a communication unit and a power supply unit.

[Get Price](#)

## Research on Capacity Optimization Configuration of Wind/PV

An individual base station with wind/photovoltaic (PV)/storage system exhibits limited scalability, resulting in poor economy and reliability. To address this, a collaborative power supply scheme for ...

[Get Price](#)



## New base station for wind power communication

Our study introduces a communications and power coordination planning (CPCP)



model that encompasses both distributed energy resources and base stations to improve communication quality of service.

[Get Price](#)

## What is wind power and photovoltaic power generation in ...

It combines wind and solar power generation, city power and battery energy storage to provide green, stable and reliable communication base stations. Power is different from the traditional

[Get Price](#)

Lower cost  
larger system

Verified Supplier

20Kwh

30Kwh



## The connection between communication base station and wind power

Hybrid energy solutions enable telecom base stations to run primarily on renewable energy sources, like solar and wind, with the diesel generator as a last resort. This reduces emissions, aligns with sustainability goals, ...

[Get Price](#)



**Contact Us**

For catalog requests, pricing, or partnerships, please visit:  
<https://k3gizycko.pl>

