

What is the charging and discharging temperature of outdoor power supply



Overview

They can discharge safely in temperatures as low as -20°C (-4°F) and as high as 60°C (140°F). That means you can draw power even when the mercury drops significantly. However, charging is a different story. This article explains how temperature affects performance, shares industry-specific best practices, and provides actionable tips to optimize your system. What is an outdoor power supply The outdoor power supply is an outdoor multifunctional power supply with a built-in lithium-ion battery and its own electric energy storage, also known as a portable AC or DC power supply. Promote longer stays, better productivity, and an optimal outdoor experience at higher education campuses, offices, parks, patios, and more.

What is the charging and discharging temperature of outdoor power



Outdoor power supply Q& A: What should I pay attention to when charging

You should choose a matching charging and discharging method according to the instructions or labels of your outdoor power supply, such as using special charging and discharging ...

[Get Price](#)

Bringing the Indoors Out: The Ultimate Guide to Outdoor Power and ...

Outdoor power and charging solutions have become more versatile and efficient, catering to the needs of a variety of applications and end-users. Learn how to best select the right outdoor power and ...



[Get Price](#)



What Is the Minimum Temperature for Outdoor Power Supply? Key ...

A common question we hear is: "What is the minimum temperature for outdoor power supply systems?" This article dives into technical limits, real-world challenges, and solutions to ensure reliability in ...

[Get Price](#)

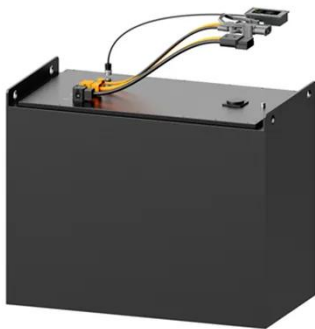
What temperature environment is the outdoor power supply suitable

...

Use of the temperature at -10? -40? is the best time. When using, try to avoid outdoor power in the sun exposure to power overheating, overheating affects the use of power supply.



[Get Price](#)



Battery Charging and Discharging at High and Low Temperatures

Battery chemistry dictates ideal temperature ranges: Lithium-ion batteries typically charge best between 32°F and 113°F, while nickel-based and lead-acid chemistries have broader but

...

[Get Price](#)

Understanding Outdoor Power Stations: All You Need to Know

Learn all about outdoor power stations, their working principle, charging methods, and application scenarios. Get the complete lowdown in one article from Topwell Power.



[Get Price](#)

Storing Power Station In The Winter

Most modern power stations are equipped with LiFePO4 batteries. They



can discharge safely in temperatures as low as -20°C (-4°F) and as high as 60°C (140°F). That means you can draw power ...

[Get Price](#)

Frequently asked Battery Charging and Discharge Q& As

How long the current is available, and at what temperature the charging activity is taking place. Generally, idling the engine or on short "stop-and-go trips" during cold or hot weather or at night will ...

[Get Price](#)



Battery Charging and Discharging at High and Low Temperatures

You should choose a matching charging and discharging method according to the instructions or labels of your outdoor power supply, such as using special charging and discharging ...

[Get Price](#)

What Is the Discharge Temperature of Outdoor Power Supply? Key ...

Summary: Understanding the discharge temperature of outdoor power supplies is critical for efficiency and safety. This

article explains how temperature affects performance, shares industry-specific best ...

[Get Price](#)



Contact Us

For catalog requests, pricing, or partnerships, please visit:
<https://k3gizycko.pl>

