

# Which photovoltaic site is better to change



## Overview

---

In most cases, the best direction for solar panels is facing south 1. Arrays that are appropriately oriented can improve energy output by up to 30% or more 2. However, factors such as roof slope and proximity to the equator may have some homeowners considering other directions. Selecting the right location directly impacts the performance of solar panels. Identifying a high-yield. The best solar panel angle by location is determined by factors such as geographic latitude, seasonal changes, and local climate conditions, which significantly influence sunlight capture and energy generation.

## Which photovoltaic site is better to change

**LPR Series 19'  
Rack Mounted**



### Where Should You Put Solar Panels?

Our guide will consider the various options for solar panel placement and how these affect power output. Before we dig into the specific placement options, it's a good idea to have an ...

[Get Price](#)

### Choosing the Best Locations for Solar Energy: Factors to Consider

In this article, we break down the key factors solar developers should consider when evaluating land to identify projects that pencil, scale, and succeed long term. The top 3 states for ...



[Get Price](#)

**Outdoor Cabinet BESS**  
50 kWh/500 kWh Battery Storage System  
Industrial and Commercial Energy Storage



-  **All In One**  
Integrating battery packs
-  **Intelligent Integration**  
integrated photovoltaic storage cabinet
-  **High-capacity**  
50-500kWh
-  **Rated AC Power**  
50-100kW
-  **Degree of Protection**  
IP54
-  **Altitude**  
3000m(>3000m derating)
-  **Operating Temperature Range**  
-20-60°C;(Derating above 50°C)

### How to Determine the Best Solar Panel Angle by Location: A Step-by

...

For maximum power generation, it is essential to place photovoltaic systems at the correct solar panel angle by location to improve sunlight exposure, which changes with the seasons and ...

[Get Price](#)

### Location Matters: Solar Energy

## Efficiency Explained

Selecting installation sites that maximize sunlight exposure--particularly those free from significant shading--can substantially increase energy production. For example, a community solar ...

[Get Price](#)



## How to Choose the Best Location for Solar Panel Installation to

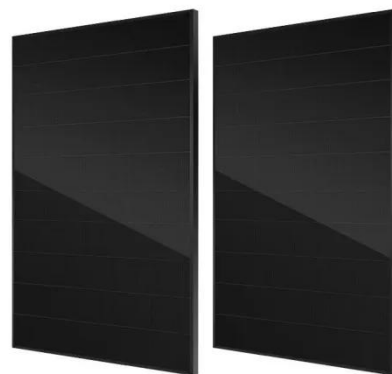
Switching to solar energy is an exciting step toward saving money and helping the environment, but figuring out where to install your panels can feel overwhelming. Choosing the right spot isn't just ...

[Get Price](#)

## 5 Best Places for Panels , AskSolar

When you're considering adding solar power generation to your property, it's important to think about optimal placement. You'll get the most energy when your panels are positioned to collect ...

[Get Price](#)



## Maximize Efficiency: Best Direction for Solar Panels , Sunrun

In most cases, the best direction for solar panels is facing south 1. Arrays that are appropriately oriented can

improve energy output by up to 30% or more 2. However, factors such as ...

[Get Price](#)



---

## Which location is better for solar installation? , NenPower

Installing panels at the optimal tilt angle--generally determined by the geographical latitude of the installation site--enhances their ability to capture solar energy throughout the day. ...

[Get Price](#)



---

## How to Choose the Best Location for Solar Panels

When choosing the location for solar panels, you must decide between a roof-mounted or ground-mounted system. Each option has advantages and disadvantages, and the choice will ...

[Get Price](#)

---

## Solar Panel Direction & Orientation: 2025 Complete Guide

Our certified professionals will conduct a comprehensive site assessment, including detailed shading analysis and orientation optimization, to ensure your

panels are positioned for peak ...

[Get Price](#)



---

## Contact Us

For catalog requests, pricing, or partnerships, please visit:  
<https://k3gizycko.pl>

