

Why should the angle of photovoltaic panels be adjusted

Lithium battery parameters

Product capacity: 100Ah

Product size: 135*197*35mm

Product weight: 1.82kg 197mm
/7.7in

Product voltage: 3.2V

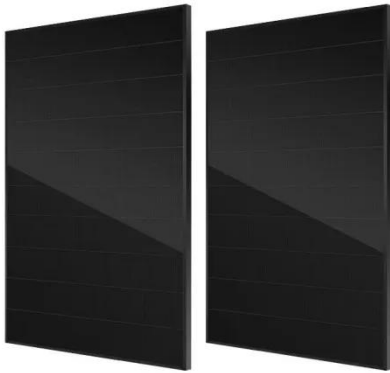
internal resistance: within 0.5



Overview

The solar panel's best angle determines how much sunlight your panels capture throughout the year, directly impacting energy production and ROI. A correctly tilted system can improve efficiency by 5–10% annually, reducing payback time and boosting long-term savings. The photovoltaic cells absorb the most solar energy available at that instant when the sun's rays strike. This PV panel orientation for south-facing solar is also often called the azimuth angle for south-facing solar. Flatter tilts work better in summer, steeper tilts in winter. Factors like geographic location, season, tracking capability, and. An equally important factor, though, is the angle at which the panels are placed. Getting this right ensures you see the strongest return on your investment. The best angle isn't universal, however.

Why should the angle of photovoltaic panels be adjusted



What is the optimal orientation and tilt angle for solar panels

To best optimize the production of solar panels, do not underestimate the importance of their orientation and inclination! However, it's not always about producing a maximum amount of ...

[Get Price](#)

What's the Best Angle for Solar Panels? Optimum Tilt

By adjusting the tilt to better match the sun's path, you can improve performance and reduce maintenance needs. The right tilt for solar panels is based on how the sun moves across the ...



[Get Price](#)



What is the Best Angle for Solar Panels? Maximizing the Efficiency

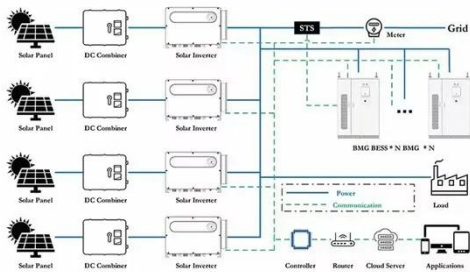
Positioning solar panels at the best angle is essential for maximizing the efficiency of your solar energy system. The optimal solar panels angle allows the photovoltaic cells to capture the most direct ...

[Get Price](#)

Solar Panel Angle and Performance: Why Tilt and Direction Matter

Generally, the best angle for solar panels is said to be around the latitude of the site. This is to make sure that it captures sunlight efficiently all year. Let's assume that you live about 40° of latitude. In ...

[Get Price](#)



What Angle Should My Solar Panels Be? Understanding the Basics of ...

By adjusting this perspective, homeowners can figure out what angle should my solar panels be to greatly improve the quantity of sunlight received, resulting in heightened power ...

[Get Price](#)

Solar Panel Angle: Unlock Maximum Efficiency

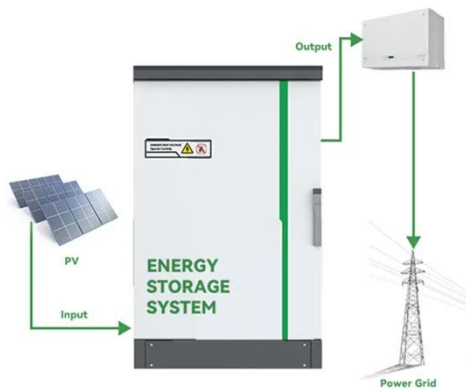
Choosing the optimal angle for solar panels is crucial to maximizing their efficiency and energy output. When solar panels are installed at the correct angle, they can capture the maximum amount of ...

[Get Price](#)



Solar Panel Best Angle , Tilt & Orientation Guide 2025

In short, the solar panel's best angle matters because it ensures maximum



sunlight capture, reduces maintenance issues, improves system longevity, and boosts financial returns. ...

[Get Price](#)

Solar Angle Secret: Are Your Panels Tilted Right?

The tilt of your solar panels directly affects the amount of sunlight impacting their surface, thereby determining the generated volume of electricity. Your system's production and your return on

...



[Get Price](#)



What is the best angle for solar panels - Expert Tips

Panels tilted closer to vertical can grab more low winter sun, while a flatter angle works better in summer. If adjusting isn't your thing, just stick with the latitude rule and you'll still get solid

...

[Get Price](#)

Best Angle for Solar Panels: How to Maximize Sunlight

The angle of solar panels is essential for capturing maximum sunlight, as it

directly affects how efficiently panels convert solar energy. When panels are positioned at the optimal angle, ...

[Get Price](#)



Contact Us

For catalog requests, pricing, or partnerships, please visit:
<https://k3gizycko.pl>

